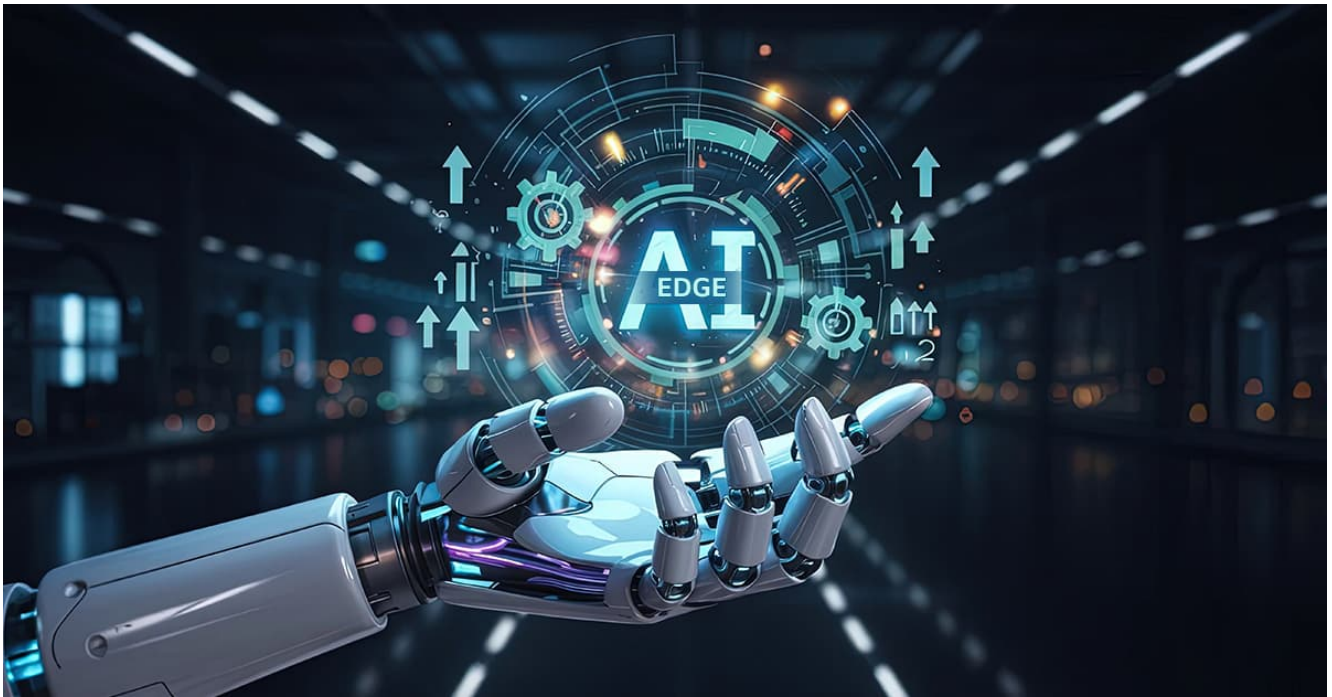


[View on Web](#)

Edge AI: Powering Smarter, Faster, and Safer Decisions at the Source

📅 1st Oct,2022

In today's data-driven world, speed and accuracy are everything. Businesses are under pressure to process massive volumes of information in real time—whether it's to respond to customers instantly, monitor equipment health, or streamline city traffic. This is where **Edge AI** steps in as a game-changer. By combining artificial intelligence with edge computing, it enables devices to process data and make decisions locally, without waiting on the cloud.



Moving Beyond the Cloud: Why Edge AI Matters

Unlike traditional AI models that require constant cloud connectivity, Edge AI brings processing power directly to the source—whether that's a sensor on a manufacturing floor or a camera on a city street. This shift reduces latency, boosts speed, and lowers dependence on central servers. More importantly, it makes AI truly usable in environments where real-time decisions matter most—like autonomous vehicles, remote healthcare devices, or industrial safety systems.

The Rise of Autonomous, Intelligent Devices

Edge AI allows machines to mimic human cognition—perceiving surroundings, learning from patterns, and making decisions—all without human intervention. From smart home appliances and delivery robots to AI-assisted farming tools, these devices are revolutionizing how we live and work. The intelligence embedded in them not only drives efficiency but also personalizes user experiences and brings automation to new frontiers.

Case in Point: Smart Conveyor Monitoring at NALCO

A powerful example of Edge AI in action comes from **CSM Tech's collaboration with NALCO** at the Damanjodi Mines. There, CSM deployed an AI-powered Conveyor Belt Monitoring System that uses real-time computer vision to detect foreign objects on empty belts—an innovation that prevents equipment damage and costly downtime. Equipped with high-resolution cameras and edge computing capabilities, the system sends instant alerts via dashboard, SMS, or email. It even adapts to nighttime conditions, fog, and speed fluctuations, showcasing the precision and versatility of Edge AI in industrial settings.

User Expectations, Speed & Security: The Triple Win

Today's users expect seamless, real-time interactions. Delays of even a few seconds can degrade experience and productivity. Edge AI rises to this challenge by offering ultra-low latency, ensuring that devices and systems respond instantly. Beyond speed, Edge AI also improves data security by keeping sensitive information on local devices instead of transmitting it across networks, thus reducing the risk of breaches and compliance issues.





Smarter Tools, Lower Costs, Wider Adoption

The democratization of Edge AI is now in full swing. Thanks to the falling costs of sensors, GPUs, and other AI-ready hardware, this once high-tech niche is now becoming mainstream. Businesses—big and small—are incorporating Edge AI into solutions ranging from smart irrigation in agriculture to real-time patient monitoring in rural healthcare. What was once a futuristic concept is now a practical, affordable reality.

What the Future Holds: A Booming Market and Boundless Potential

The numbers say it all. The **Edge AI software market** is expected to surpass **\$3 billion by 2027**, while the broader **edge computing sector** is projected to grow to **\$43.4 billion**, according to Grand View Research. Key drivers include technological advances, rising

enterprise demand for real-time automation, and the need to process the ever-growing ocean of IoT data efficiently. As industries seek speed, resilience, and smarter operations, Edge AI is set to become the digital brain behind everything from smart grids to self-optimizing factories.

CSM Tech’s Vision: Enabling Intelligence Where It Matters Most

CSM Tech stands at the forefront of this revolution. Through innovative solutions like the NALCO Conveyor Monitoring System, the company is showing how Edge AI can make operations not just smarter, but safer and more sustainable. By bringing intelligence to the edge, CSM Tech empowers businesses to unlock new levels of performance, efficiency, and insight—right where the action happens.

If you're ready to embrace the future of real-time intelligence, it's time to think beyond the cloud. It's time to think Edge.



AUTHOR:

Tapaswini Swain

Communication Consultant, Marketing